

AREA SUMMARY

WEDDING VENUE BUILDING GFA:	351.7m <sup>2</sup>
SERVICED APARTMENT FOOTPRINT (x5):	191.0m <sup>2</sup>
38.2m <sup>2</sup> each (x5)	
TOTAL AREA:	542.7m <sup>2</sup>

LOCATION OF EFFLUENT TREATMENT SYSTEM , EFFLUENT IRRIGATION AREA (4 x 200m<sup>2</sup>), NUTRIENT ASSIMILATION AREA (4 x 200m<sup>2</sup>) AND ALTERNATIVE EFFLUENT DISPERSAL AREA (1600m<sup>2</sup>)

50m APZ ZONE AROUND WEDDING FUNCTION BUILDING

ACCESSWAY TO COMPLY WITH BUSHFIRE ASSESSMENT PREPARED BY AUSTRALIAN BUSHFIRE ASSESSMENT CONSULTANTS

50m APZ ZONE AROUND ACCOMMODATION STRUCTURES

LOCATION OF EFFLUENT TREATMENT SYSTEM , EFFLUENT IRRIGATION AREA (400m<sup>2</sup>) AND ALTERNATIVE EFFLUENT DISPERSAL AREA (400m<sup>2</sup>)

SITE OVERVIEW

ACCESSWAY TO COMPLY WITH BUSHFIRE ASSESSMENT PREPARED BY AUSTRALIAN BUSHFIRE ASSESSMENT CONSULTANTS

LEGEND

- (A) ENTRY POINT FROM ROADWAY & PARKING
- (B) FORMAL GARDENS WITH CEREMONY FACILITIES
- (C) WEDDING RECEPTION MAIN BUILDING
- (D) PHOTO OPPORTUNITY DECK SURROUNDING TREE
- (E) PHOTO OPPORTUNITY EXISTING DAM
- (F) PHOTO OPPORTUNITY ALPACAS
- (G) PHOTO OPPORTUNITY VIEWING PLATFORM/ RUIN
- (H) SERVICED APARTMENT ACCOMMODATION
- (I) EXISTING COTTAGE
- (J) PROPOSED NEW DWELLING (NOT PART OF THIS DA)
- (K) PROPOSED NEW VINEYARD
- (L) NEW CARPARKING
- (M) EXISTING SHED

PROJECT  
394 GOODA CREEK RD  
MURRUMBATEMAN  
MASTER PLAN

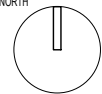
DRAWING TITLE  
MASTER PLAN  
SITE OVERVIEW

CLIENT  
394 GROUP PTY LTD  
GOODA CK ROAD MURRUMBATEMAN

SCALE  
1:2000(A3)

DRAWN  
AL&CH

PROJECT ARCHITECT  
AL&CH  
COORD.  
REVIEWED  
PROJECT DIRECTOR  
AL&CH  
DATE  
20.05.25  
APPROVED  
DRAWING NUMBER  
REVISION  
NORTH  
A001 A



REV	DESCRIPTION	DRAWN	DATE
P7	ISSUE FOR INFORMATION	AL&CH	12.12.24
P8	ISSUE FOR INFORMATION	AL&CH	19.12.24
P9	ISSUE FOR INFORMATION	AL&CH	27.03.25
P10	ISSUE FOR INFORMATION	AL&CH	09.05.25
A	DEVELOPMENT APPLICATION SUBMISSION	AL&CH	20.05.25

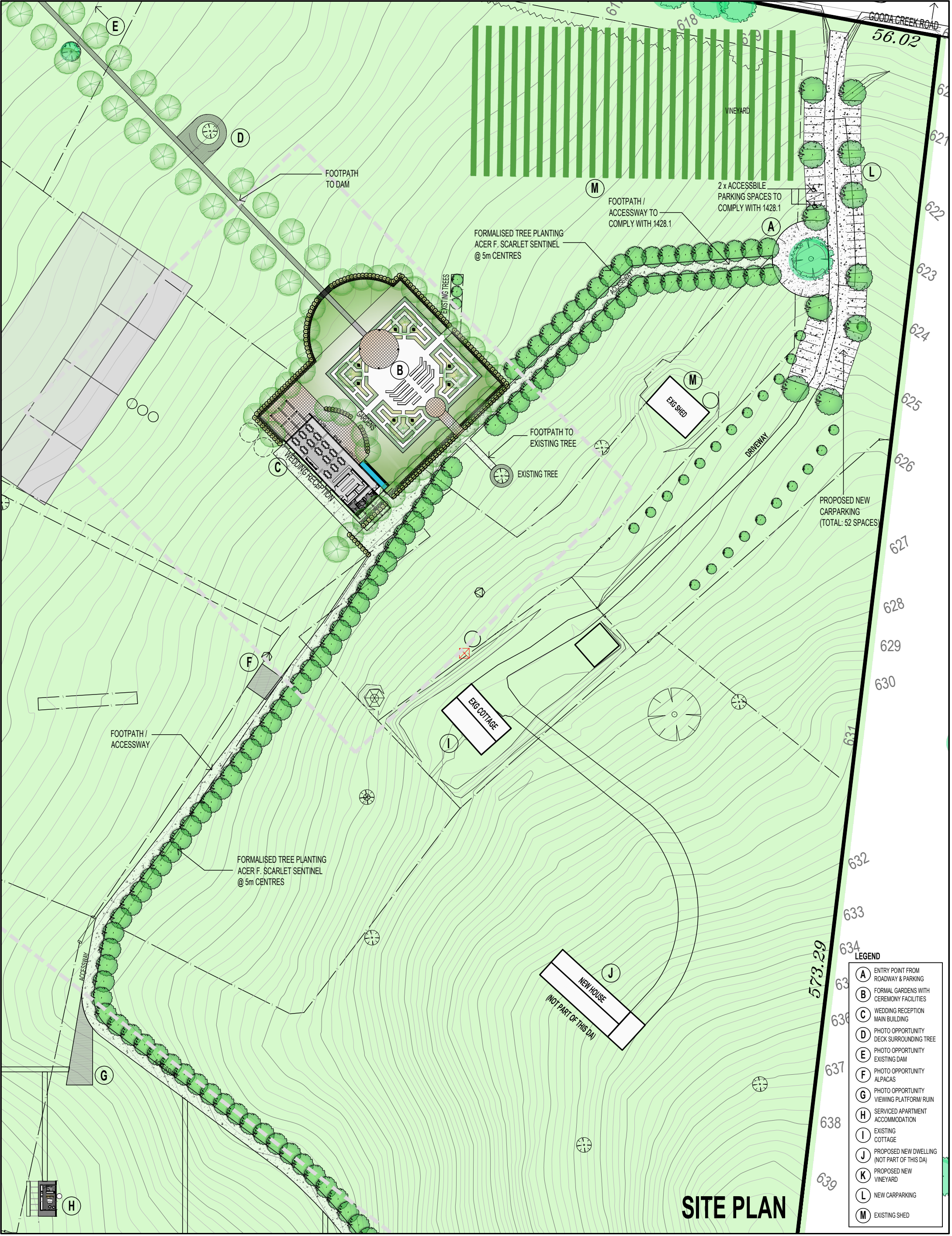
NOTES  
All dimensions are in millimetres. All levels are in metres. Do not scale off drawing. All structure to engineers specification. All dimensions, levels and site conditions must be verified by contractor prior to commencement of any work. All work must be carried out in accordance with the current edition of the Building Code of Australia & all relevant Australian Standards.

COPYRIGHT  
© copyright : heyward lance architecture pty ltd  
Reproduction of this design and/or document in whole or in part without prior written consent is an infringement of copyright.

heyward lance architecture  
unit 68-12 challis st.dickson act 2602p : 02 6255 4454







SITE PLAN

- LEGEND
- (A) ENTRY POINT FROM ROADWAY & PARKING
  - (B) FORMAL GARDENS WITH CEREMONY FACILITIES
  - (C) WEDDING RECEPTION MAIN BUILDING
  - (D) PHOTO OPPORTUNITY DECK SURROUNDING TREE
  - (E) PHOTO OPPORTUNITY EXISTING DAM
  - (F) PHOTO OPPORTUNITY ALPACAS
  - (G) PHOTO OPPORTUNITY VIEWING PLATFORM/ RUIN
  - (H) SERVICED APARTMENT ACCOMMODATION
  - (I) EXISTING COTTAGE
  - (J) PROPOSED NEW DWELLING (NOT PART OF THIS DA)
  - (K) PROPOSED NEW VINEYARD
  - (L) NEW CARPARKING
  - (M) EXISTING SHED

PROJECT  
**394 GOODA CREEK RD  
MURRUMBATAMAN  
MASTER PLAN**

CLIENT  
**394 GROUP PTY LTD  
GOODA CK ROAD MURRUMBATAMAN**

PROJECT NO: 2331

DRAWING TITLE  
**SITE PLAN  
- FINAL STAGE**

SCALE  
1:1000(A3)

DRAWN  
AL&CH

PROJECT ARCHITECT  
AL&CH

COORD.  
REVIEWED

PROJECT DIRECTOR  
AL&CH

DATE  
20.05.25

DRAWING NUMBER  
REVISION  
**A002 A**

NORTH

REV	DESCRIPTION	DRAWN	DATE
P7	ISSUE FOR INFORMATION	AL&CH	12.12.24
P8	ISSUE FOR INFORMATION	AL&CH	19.12.24
P9	ISSUE FOR INFORMATION	AL&CH	27.03.25
P10	ISSUE FOR INFORMATION	AL&CH	09.05.25
A	DEVELOPMENT APPLICATION SUBMISSION	AL&CH	20.05.25

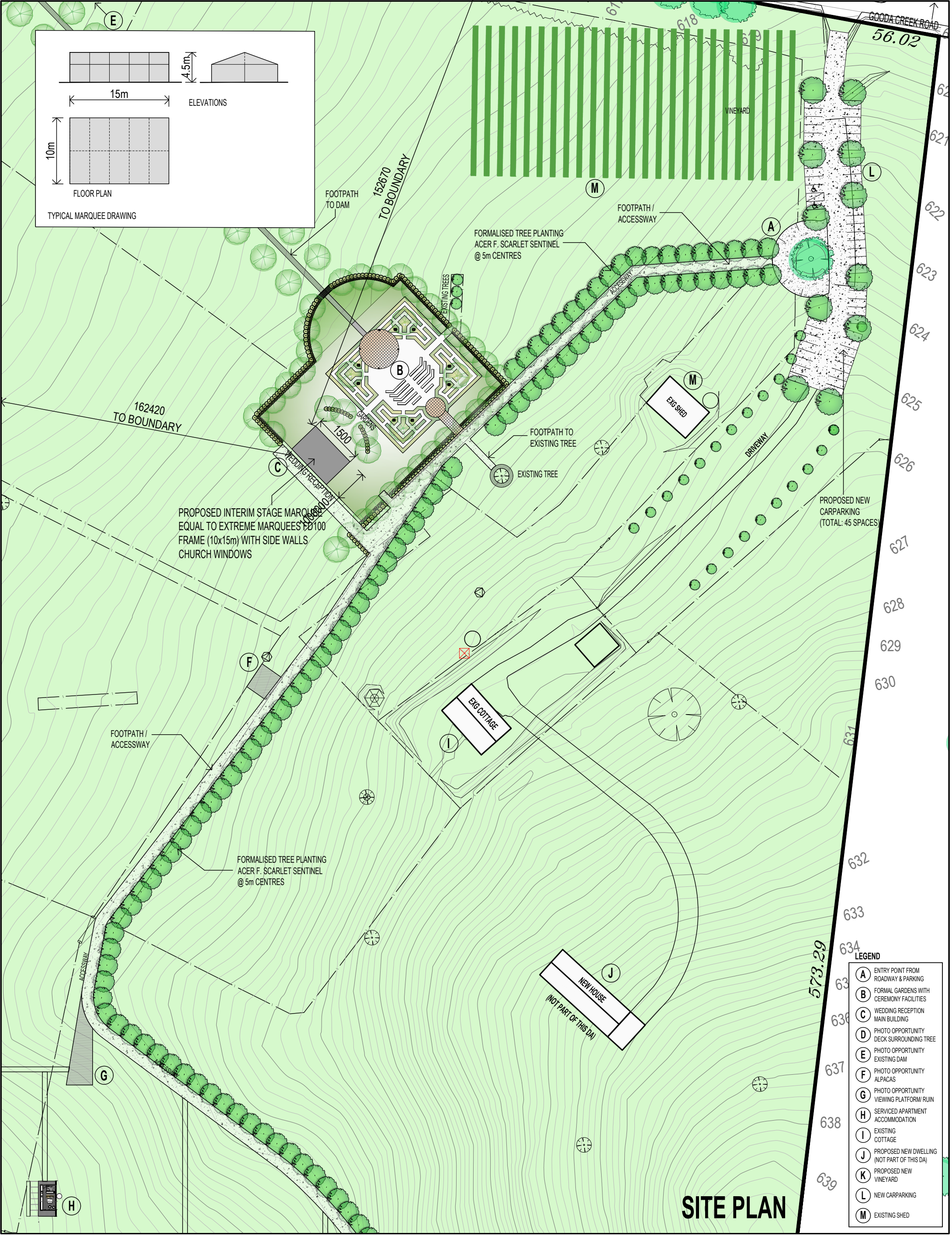
NOTES  
All dimensions are in millimetres. All levels are in metres. Do not scale off drawing. All structure to engineers specification. All dimensions, levels and site conditions must be verified by contractor prior to commencement of any work. All work must be carried out in accordance with the current edition of the Building Code of Australia & all relevant Australian Standards.

COPYRIGHT  
© copyright : heyward lance architecture pty ltd  
Reproduction of this design and/or document in whole or in part without prior written consent is an infringement of copyright.

heyward lance architecture  
unit 68-12 challis st.dickson act 2602p : 02 6255 4454







PROJECT  
**394 GOODA CREEK RD  
MURRUMBATEMAN  
MASTER PLAN**

CLIENT  
**394 GROUP PTY LTD**  
GOODA CK ROAD MURRUMBATEMAN

PROJECT NO: 2331

DRAWING TITLE  
**SITE PLAN  
- INTERIM STAGE**

SCALE  
1:1000(A3)

DRAWN  
AL&CH

PROJECT ARCHITECT  
AL&CH

COORD.  
REVIEWED

PROJECT DIRECTOR  
AL&CH

DATE  
20.05.25

DRAWING NUMBER  
A003

REVISION  
A

NORTH

REV	DESCRIPTION	DRAWN	DATE
P1	ISSUE FOR INFORMATION	AL&CH	27.03.25
P2	ISSUE FOR INFORMATION	AL&CH	09.05.25
A	DEVELOPMENT APPLICATION SUBMISSION	AL&CH	20.05.25

NOTES  
All dimensions are in millimetres. All levels are in metres. Do not scale off drawing. All structure to engineers specification. All dimensions, levels and site conditions must be verified by contractor prior to commencement of any work. All work must be carried out in accordance with the current edition of the Building Code of Australia & all relevant Australian Standards.

COPYRIGHT  
© copyright : heyward lance architecture pty ltd  
Reproduction of this design and/or document in whole or in part without prior written consent is an infringement of copyright.

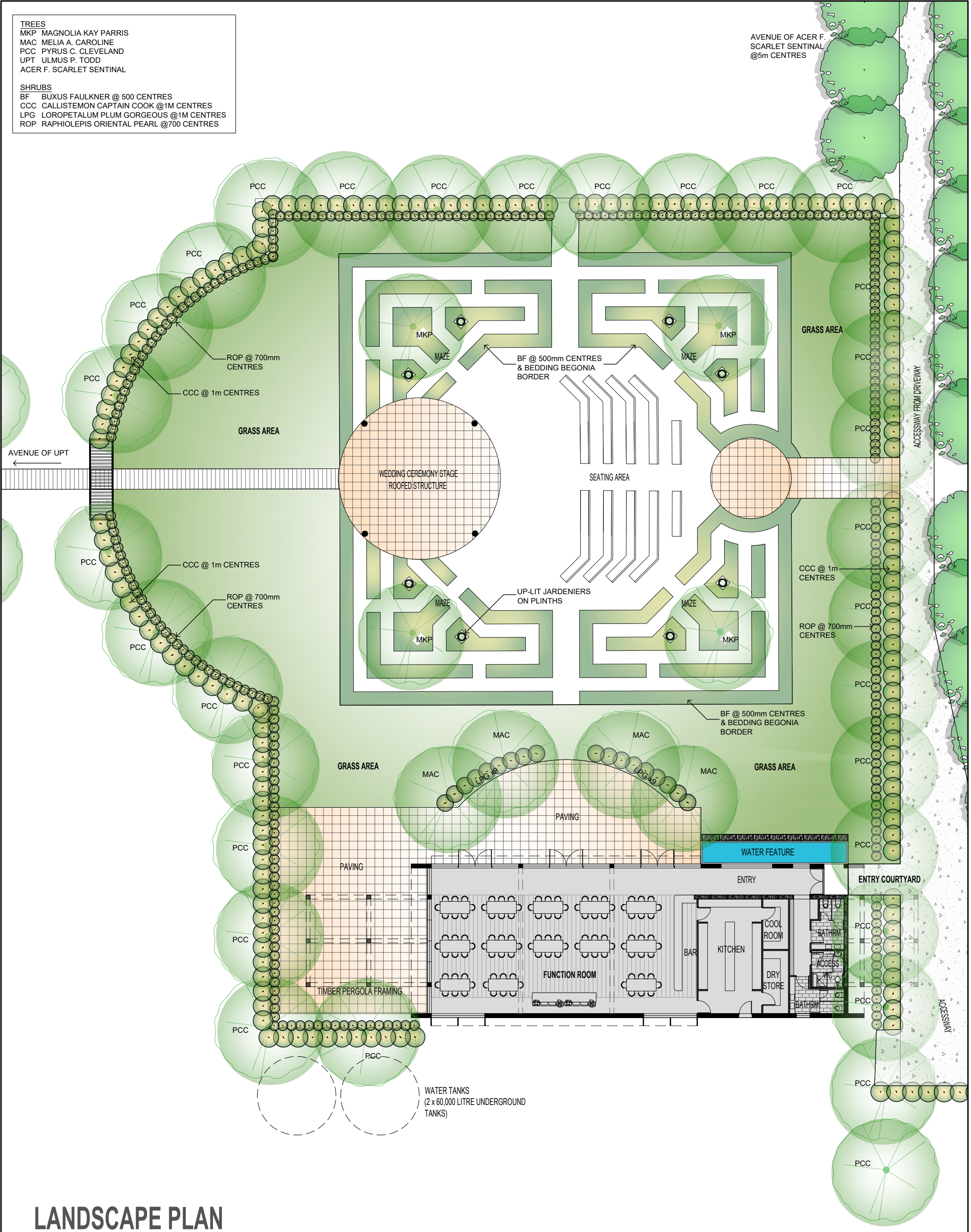
heyward lance architecture  
unit 68-12 challis st.dickson act 2602p : 02 6255 4454



TREES  
MKP MAGNOLIA KAY PARRIS  
MAC MELIA A. CAROLINE  
PCC PYRUS C. CLEVELAND  
UPT ULMUS P. TODD  
ACER F. SCARLET SENTINAL

SHRUBS  
BF BUXUS FAULKNER @ 500 CENTRES  
CCC CALLISTEMON CAPTAIN COOK @1M CENTRES  
LPG LOROPETALUM PLUM GORGEOUS @1M CENTRES  
ROP RAPHIOLEPIS ORIENTAL PEARL @700 CENTRES

AVENUE OF ACER F.  
SCARLET SENTINAL  
@5m CENTRES



LANDSCAPE PLAN





# GRADING PLAN

PROJECT	394 GOODA CREEK RD MURRUMBATAMAN MASTER PLAN
CLIENT	394 GROUP PTY LTD GOODA CK ROAD MURRUMBATAMAN
PROJECT NO	2331

DRAWING TITLE	GRADING PLAN
SCALE	1:500(A3)
DRAWN	AL&CH

PROJECT ARCHITECT	AL&CH	COORD.	REVIEWED
PROJECT DIRECTOR	AL&CH	VERIFIED	
DATE	20.05.25	APPROVED	
DRAWING NUMBER	REVISION	NORTH	
A006	A		

REV	DESCRIPTION	DRAWN	DATE
P1	ISSUE FOR INFORMATION	AL&CH	31.03.25
A	DEVELOPMENT APPLICATION SUBMISSION	AL&CH	20.05.25

NOTES	All dimensions are in millimetres. All levels are in metres. Do not scale off drawing. All structure to engineers specification. All dimensions, levels and site conditions must be verified by contractor prior to commencement of any work. All work must be carried out in accordance with the current edition of the Building Code of Australia & all relevant Australian Standards.
COPYRIGHT	© copyright : heyward lance architecture pty ltd Reproduction of this design and/or document in whole or in part without prior written consent is an infringement of copyright.

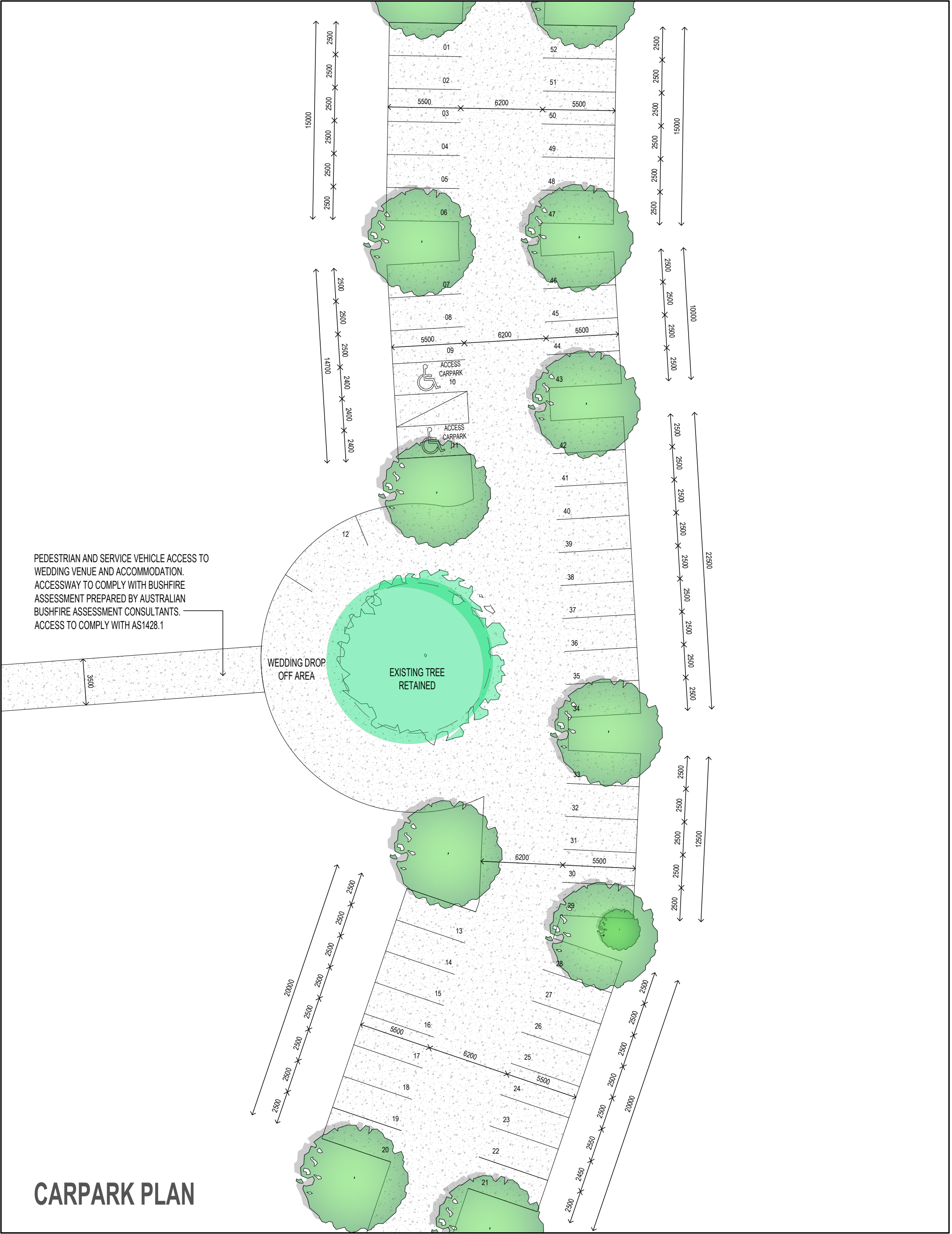
heyward lance architecture
unit 68-12 challis st.dickson act 2602p : 02 6255 4454











CARPARK PLAN

<div>PROJECT</div> <div>394 GOODA CREEK RD MURRUMBATEMAN MASTER PLAN</div>		<div>DRAWING TITLE</div> <div>CARPARK PLAN</div>		<div>PROJECT ARCHITECT</div> <div>AL&amp;CH</div>	<div>COORD.</div> <div>REVIEWED</div>	<div>REV</div> <div>P1</div>	<div>DESCRIPTION</div> <div>ISSUE FOR INFORMATION</div>	<div>DRAWN</div> <div>AL&amp;CH</div>	<div>DATE</div> <div>15.05.25</div>	<div>NOTES</div> <div>All dimensions are in millimetres. All levels are in metres. Do not scale off drawing. All structure to engineers specification. All dimensions, levels and site conditions must be verified by contractor prior to commencement of any work. All work must be carried out in accordance with the current edition of the Building Code of Australia &amp; all relevant Australian Standards.</div>
			<div>PROJECT DIRECTOR</div> <div>AL&amp;CH</div>	<div>VERIFIED</div>	<div>A</div>	<div>DEVELOPMENT APPLICATION SUBMISSION</div>	<div>AL&amp;CH</div>	<div>20.05.25</div>		
			<div>DATE</div> <div>20.05.25</div>	<div>APPROVED</div>						
			<div>DRAWING NUMBER</div>	<div>REVISION</div>	<div>NORTH</div> <div></div>					
<div>CLIENT</div> <div>394 GROUP PTY LTD GOODA CK ROAD MURRUMBATEMAN</div>		<div>SCALE</div> <div>1:250(A3)</div>	<div>DRAWN</div> <div>AL&amp;CH</div>	<div>A008</div> <div>A</div>						<div>COPYRIGHT</div> <div>© copyright : heyward lance architecture pty ltd</div> <div>Reproduction of this design and/or document in whole or in part without prior written consent is an infringement of copyright.</div>
<div>PROJECT NO: 2331</div>		<div>heyward lance architecture</div> <div>unit 68-12 challis st.dickson act 2602p : 02 6255 4454</div>								

